

Iceblink

3 W Supercontinuum Fiber Laser

Iceblink is a supercontinuum fiber laser covering the 450-2300 nm spectral range with over 3W of average power and superior stability (<0.5% std. dev.).

The spatial coherence and broad spectrum of the Iceblink makes it a great alternative to a classic lamp, single-line lasers, LEDs and ASE sources.

It is a very versatile white light source with a world of applications in the scientific and industrial sectors, including absorption/transmission measurements for material characterization, VIS, NIR and IR spectroscopy, single molecule spectroscopy and fluorescence excitation.

Spectral Range

450-2300 nm

Average Power

> 3 W

Pulse Duration

< 10 ps

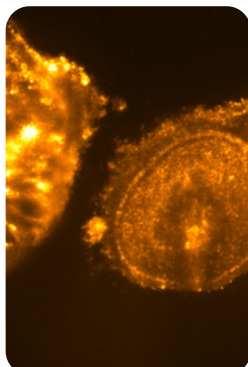
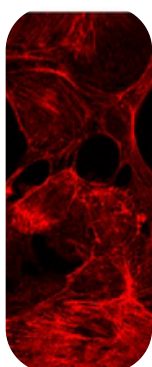
/ Highlights

Best Jitter

Best Power Stability

VIS+NIR Power Balance

/ Applications



Microscopy (FRET, TIRF, CLSM...)

Absorption / Transmission / Reflection Spectroscopy

Lifetime Measurement

Optical Device Characterization

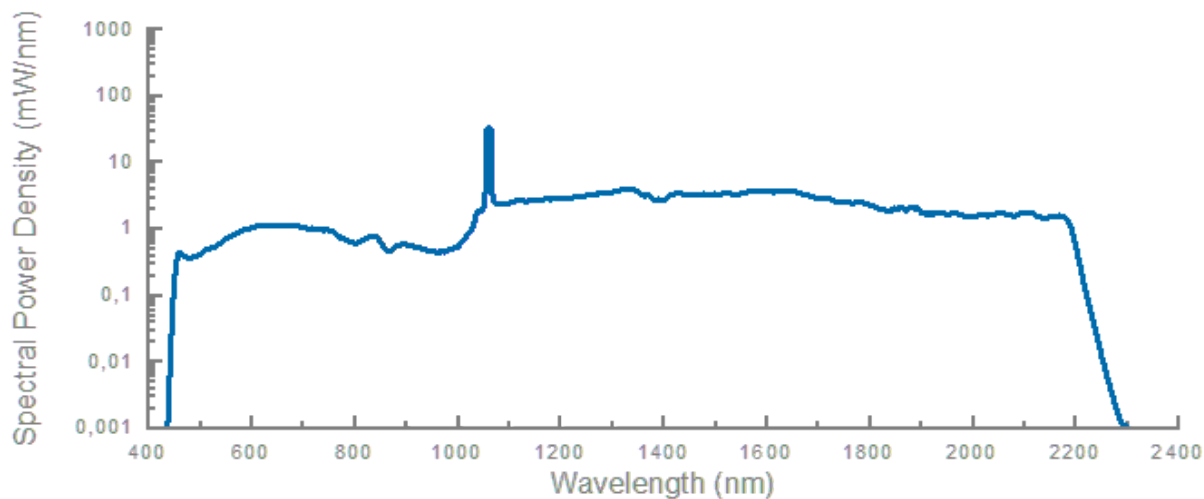
Metrology

Hyperspectral Imaging



Iceblink

/Optical Spectrum



/Accessories

Tunable Visible Range

BOREAL is the accessory for supercontinuum lasers to choose any wavelength in the visible range.

The perfect white laser plug-in accessory for bioimaging, nanophotonic and more.



Spectral Range:

450-750 nm

Optical Output:

Free Space or Multimode Fiber Output (1m) with FC/PC connector (FC/APC and Collimated output customizable)

Linewidth:

5 to 300nm

Selectable lines:

1

Resolution:

1 nm

Power Transmissions:

>75% (free space output) / > 25% (fiber output)

Iceblink

/ Technical Specifications

Spectral Range:

450-2300 nm

Average Power:

> 3 W

Repetition Rate

80 MHz

Visible Power (450-750):

> 150 mW

Pulse Duration:

< 10 ps

Power Stability:

<0,5 % (std. dev.)

Polarization:

Unpolarized

Output Port:

Single Mode / 1.0 m (customizable)

Optical Output:

Collimated (in the range 450-1000nm), Single-mode across full spectrum

Synchronization / Connections:

TTL Low Voltage

Beam Diameter:

< 4.0 mm (1/e² @ 532 nm, 0.5 m from output)

Spatial Mode:

< 1.2

Cooling:

Thermoelectric cooler + air cooling

Power Requirements:

220 V / 110V - 50/60 Hz

Operating Temperature:

20 - 30 °C

Storage Temperature:

0 - 60 °C

Dimensions:

436x560x151 (WxDxH)



436 mm

151 mm



560 mm

OTHER DETAILED SPECS UNDER REQUEST