

# SAMBA

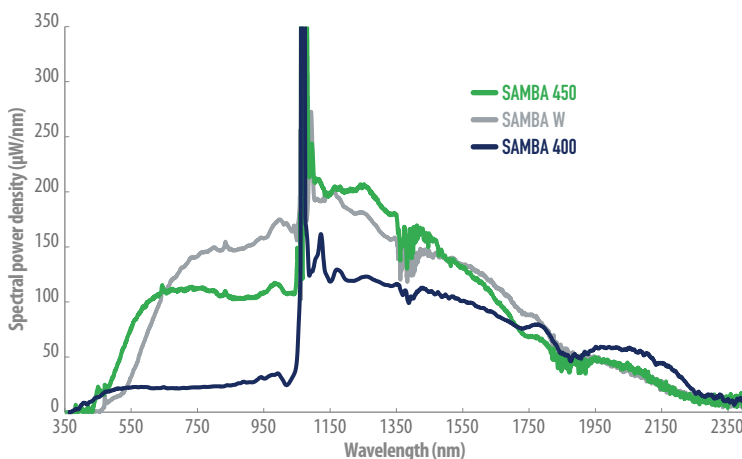
- Supercontinuum lasers
- SCIENTIFIC
- **GENERIC**



## COST EFFECTIVE SUPERCONTINUUM LASER



**SAMBA** is a supercontinuum laser for every day use in labs. They are an effective replacement for lamp, SLED, LED.

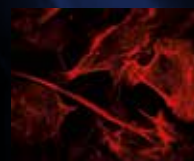


### FEATURES

- From UV to NIR 350-2400nm
- Spatially singlemode
- Free-running or externally triggerable
- High energy per pulse up to 7µJ
- Total average power up to 250mW
- Maintenance-free
- Reliable all-fibered laser source

### APPLICATIONS

- High resolution imaging
- Flow cytometry
- OCT
- Microscopy
- Optical component characterization



**LEUKOS**  
Make a bright future

# SAMBA

## COST EFFECTIVE SUPERCONTINUUM LASER

**SAMBA** offers multiple wavelengths with a flat, stable, broadband spectrum with a fibered output. Turn-key benchtop, maintenance-free, robust and user-friendly, these sources are convenient for general purpose applications.

- Supercontinuum lasers
- SCIENTIFIC
- **GENERIC**



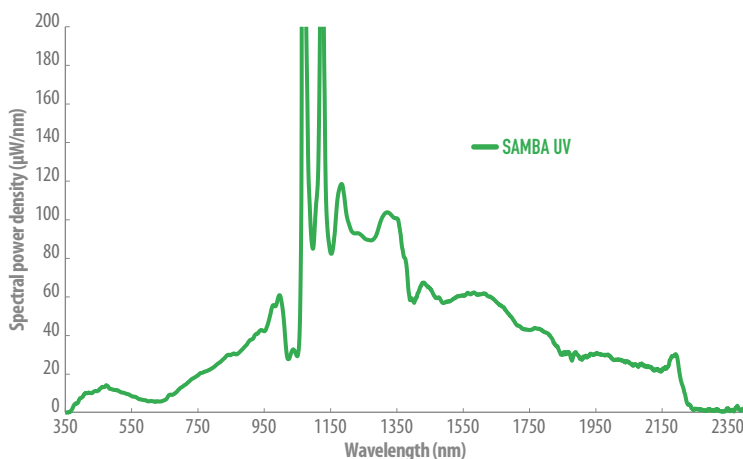
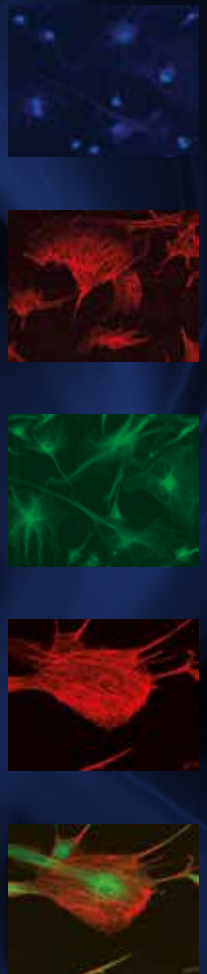
### OPTION

**Achromatic collimated laser output**

**Timing jitter optimization < 500 ns (pulse to pulse)**

**Laser optimization at another nominal repetition rate**

OPTICAL SPECIFICATIONS		SAMBA 400	SAMBA 450	SAMBA W	SAMBA UV
Spectral bandwidth	min	< 400 nm	< 450 nm	< 500 nm	< 340 nm
	max	> 2 400 nm	> 2 400 nm	> 1 900 nm	> 2 400 nm
Total average power		> 100 mW	> 150 mW	> 200 mW	> 100 mW
Total visible power		> 10 mW	> 35 mW	> 50 mW	> 10 mW
Seed repetition rate		25 kHz (typical ~ 30 kHz)			
Triggerable range		10 Hz up to > 15 kHz (typical ~ 20 kHz)			
Timing jitter		< 2µs			
Power stability		+/- 1 %			
Seed pulse width		~ 1 ns		> 1 ns	
Spatial mode		Singlemode			
Polarization state		Unpolarized			
Laser output		FC/APC (> 1 meter armored cable)			
Synchronization output		External Trigger Output			
OTHER SPECIFICATIONS					
Control interface		Front panel and USB			
Operating temperature		+5°C to +45°C non condensing			
Weight		< 3 kg			
Dimensions (LxWxh)		200x152x95 mm			
Power requirements		100-240 V, 50/60 Hz			



All specifications are subject to change without notice



**CAUTION – VISIBLE AND INVISIBLE LASER RADIATION AVOID EYE AND SKIN EXPOSURE TO DIRECT OR SCATTERED RADIATION CLASS 3B LASER PRODUCT**

**LEUKOS**  
Make a bright future

+33 (0)5 87 20 00 25  
contactus@leukos-systems.com  
[www.leukos-systems.com](http://www.leukos-systems.com)