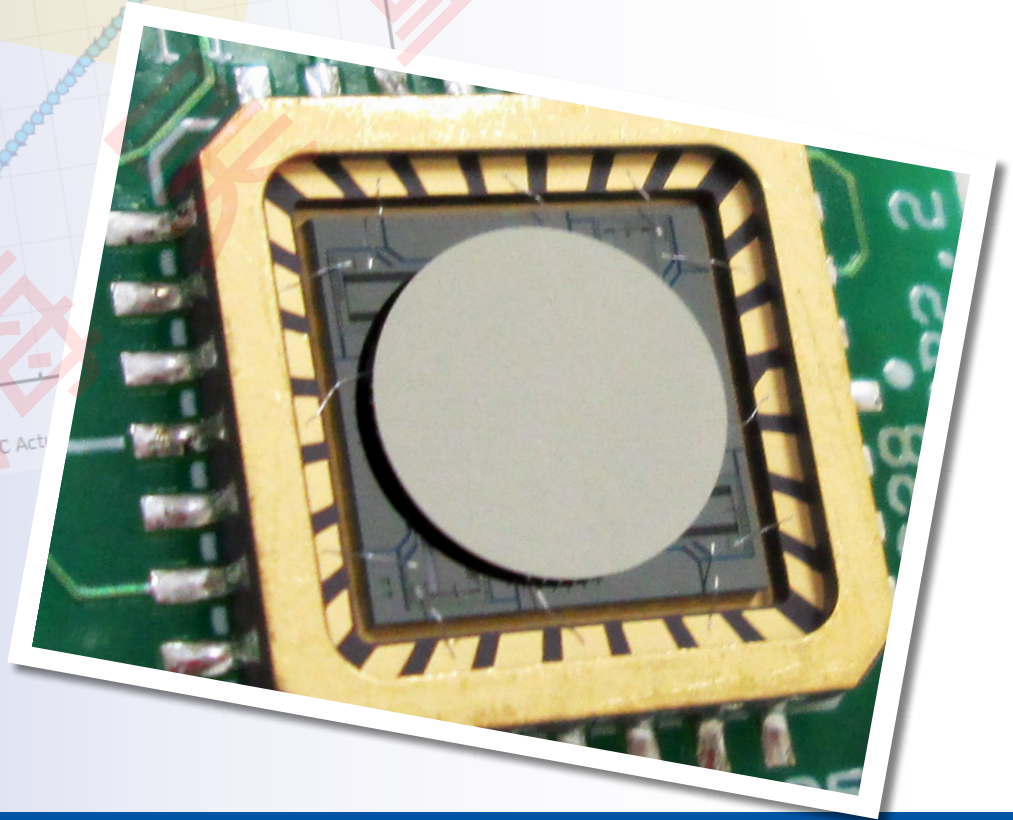
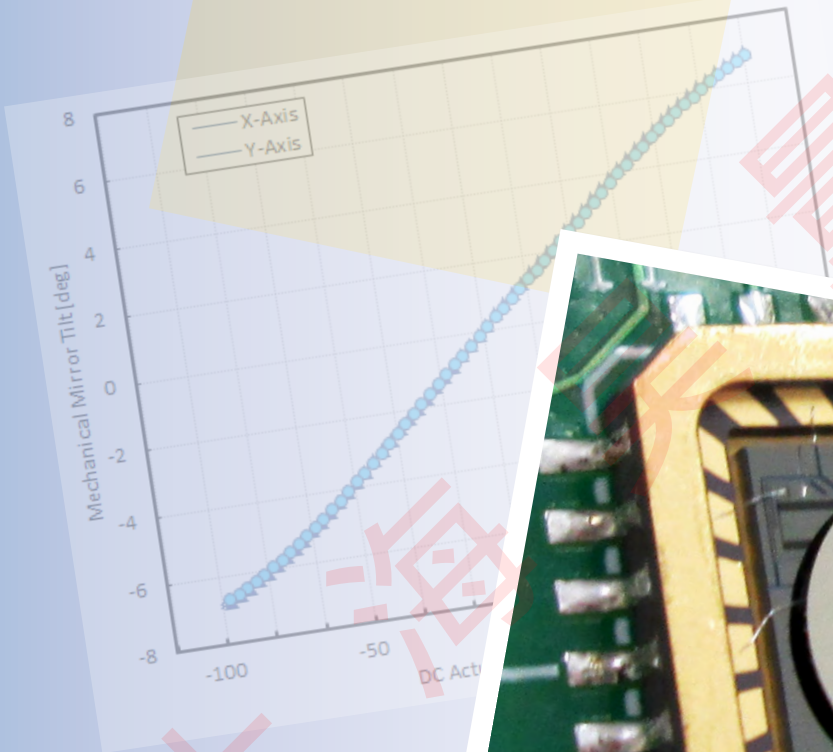


# Gimbal-Less Two-Axis Scanning MEMS Micromirrors

Device Datasheet  
S40206



---

# Device Parameters Summary

**Device ID :** S40206

**Actuator Type:** A5L2.1

**Actuator Mode :** Gimbal-less Dual-Axis Quasistatic

**Mirror Type and Size :** Bonded mirror of 7.5mm diameter

**Mirror Coating :** Aluminum

**Maximum Mech. Angle - X Axis [degrees] :** 1.0222

**Maximum Mech. Angle - Y Axis [degrees] :** 1.0500

**Maximum Vdifference - X Axis [V] :** 158

**Maximum Vdifference - Y Axis [V] :** 158

**Driver Bias Voltage (Vbias) [V] :** 80

**Maximum Mech. Angle - Coupled Axes [degrees] :** 1.2250

**Resonant Frequency - X Axis [Hz] :** 515

**Resonant Frequency - Y Axis [Hz] :** 518

**Quality Factor - X Axis :** 28

**Quality Factor - Y Axis :** 25

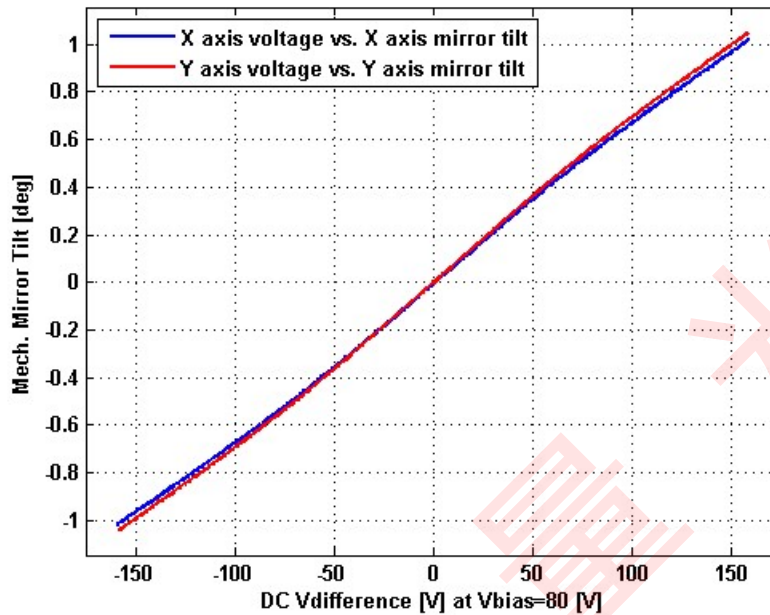
**Recommended LPF Cutoff Frequency (6th Order Bessel) [Hz] :** 240

**Date and Time Report was Created:** 07-Sep-2017 at 10:50:35

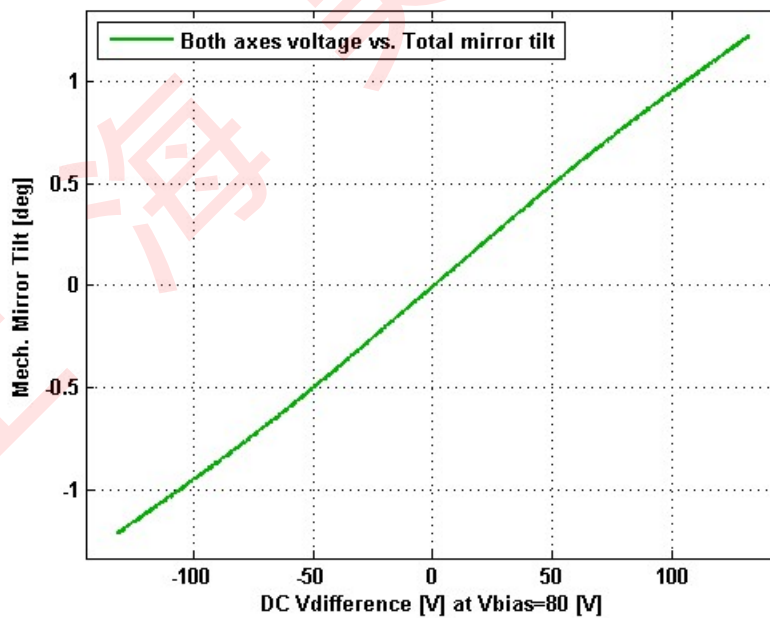
---

# Static Response

## Voltage vs. Mech. Angle - Individual Axes

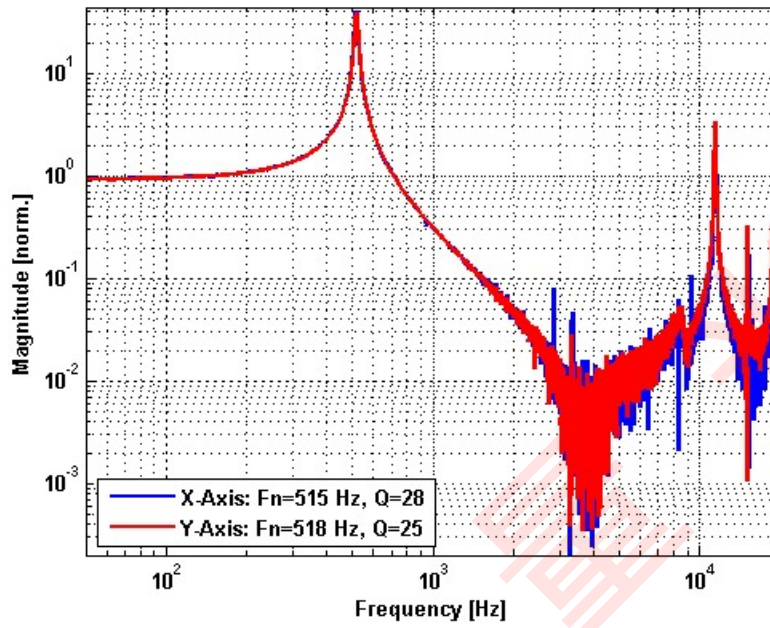


## Voltage vs. Mech. Angle - Coupled Axes

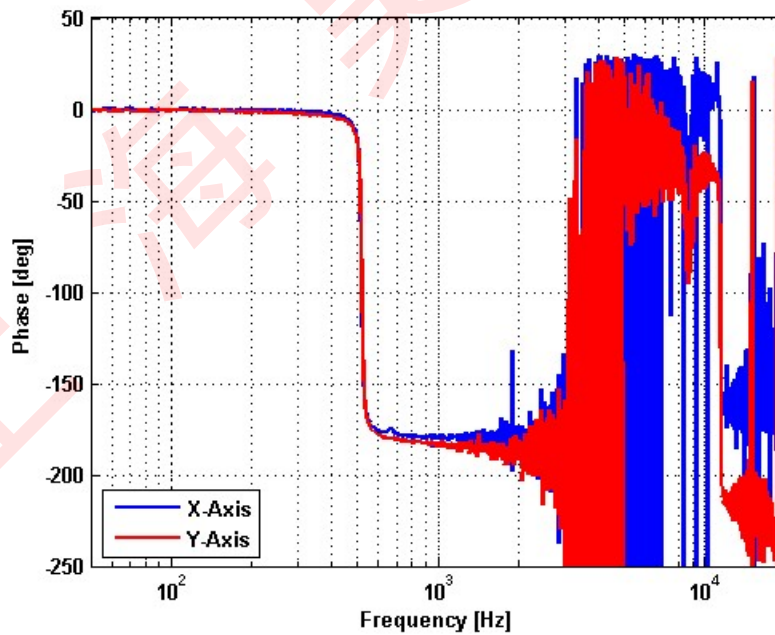


# Frequency Response

## Small Signal Frequency Response - Magnitude

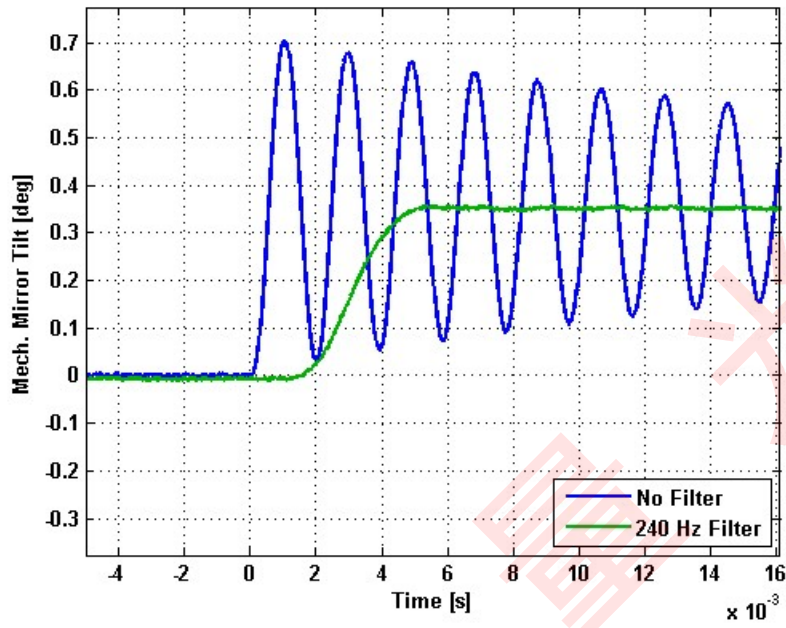


## Small Signal Frequency Response - Phase

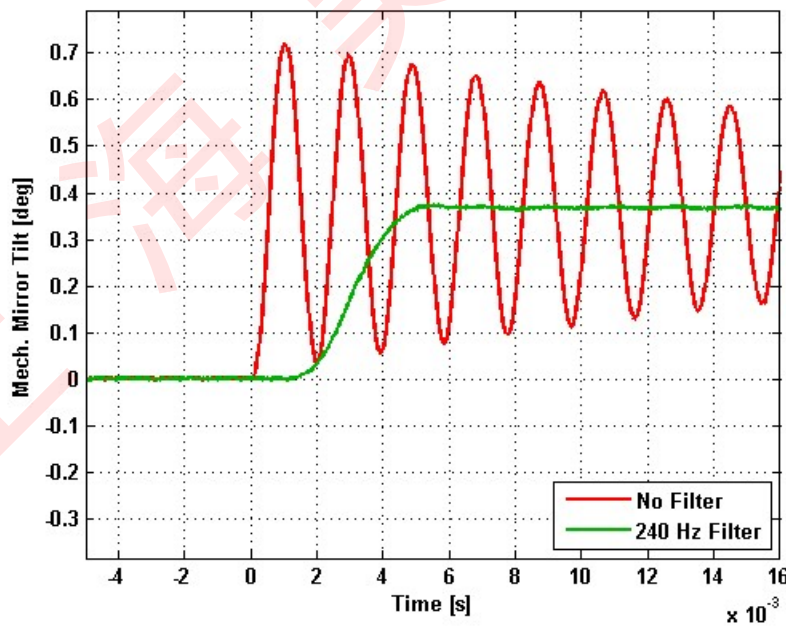


# Step Response

## X-Axis Step Response



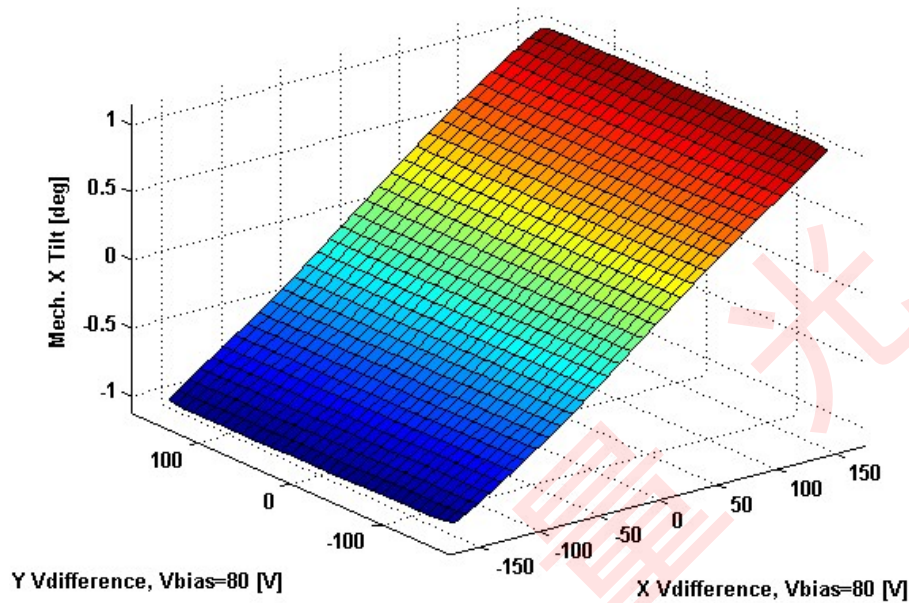
## Y-Axis Step Response



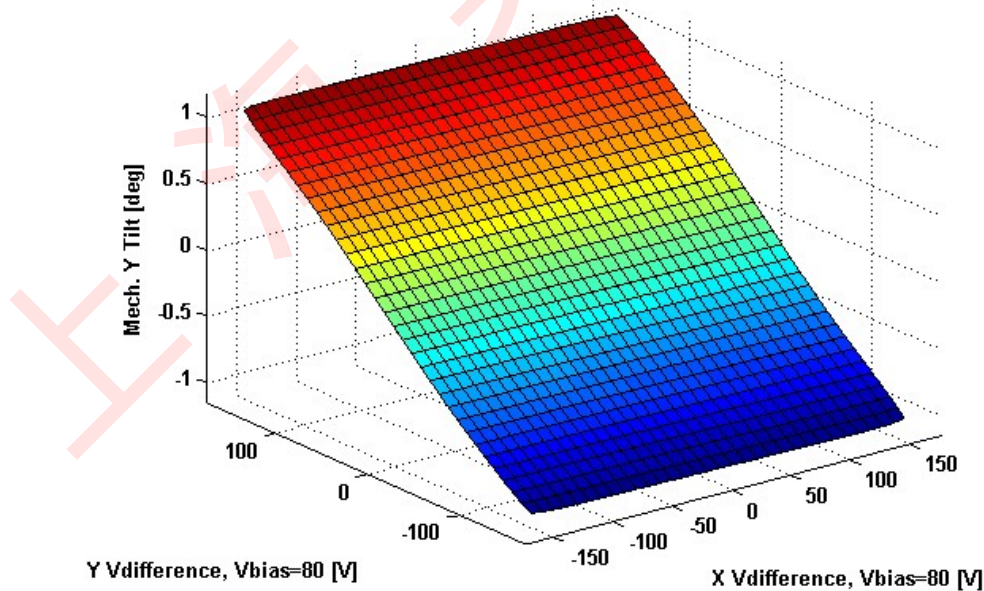
---

# 2D Lookup Tables

## Voltage vs. X Mech. Angle - Lookup Table



## Voltage vs. Y Mech. Angle - Lookup Table



# Y vs. X Tilt - Addressable Mech. Angles

