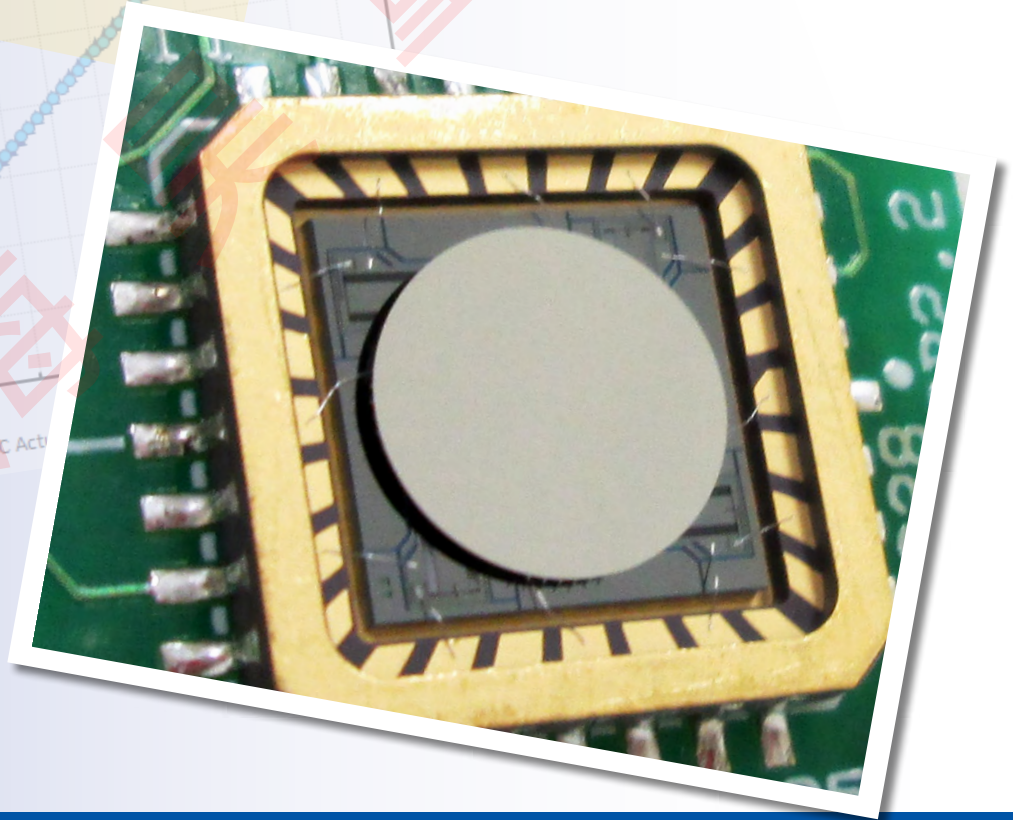
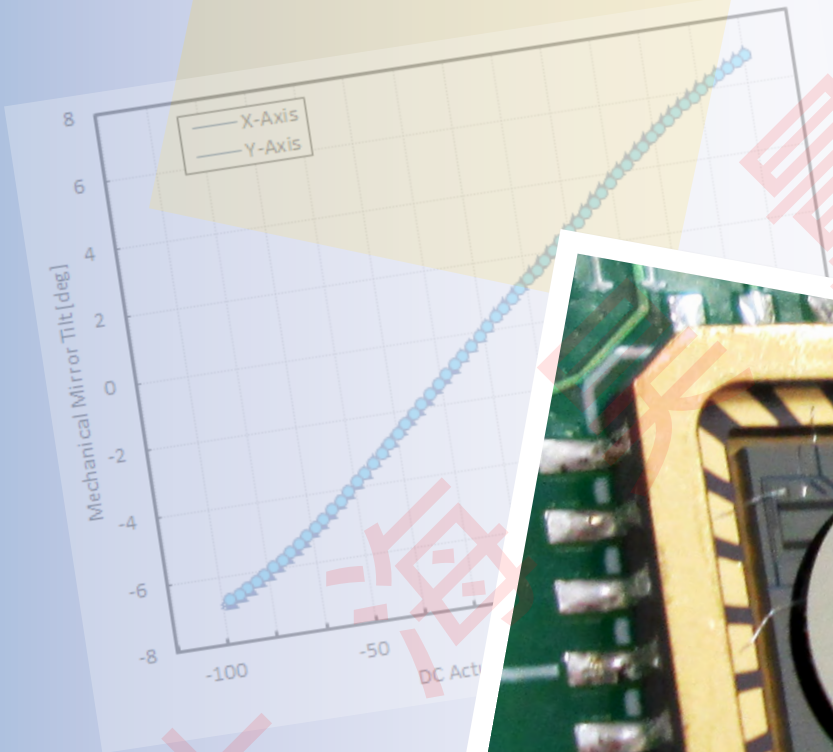


# Gimbal-Less Two-Axis Scanning MEMS Micromirrors

Device Datasheet  
S45894



---

# Device Parameters Summary

**Device ID :** S45894

**Actuator Type:** A5L3.3(C2)

**Actuator Mode :** Gimbal-less Dual-Axis Quasistatic

**Mirror Type and Size :** Bonded mirror of 4.2mm diameter

**Mirror Coating :** Aluminum

**Maximum Mech. Angle - X Axis [degrees] :** 4.4799

**Maximum Mech. Angle - Y Axis [degrees] :** 4.5055

**Maximum Vdifference - X Axis [V] :** 180

**Maximum Vdifference - Y Axis [V] :** 180

**Driver Bias Voltage (Vbias) [V] :** 90

**Maximum Mech. Angle - Coupled Axes [degrees] :** 5.7249

**Resonant Frequency - X Axis [Hz] :** 522

**Resonant Frequency - Y Axis [Hz] :** 518

**Quality Factor - X Axis :** 41

**Quality Factor - Y Axis :** 41

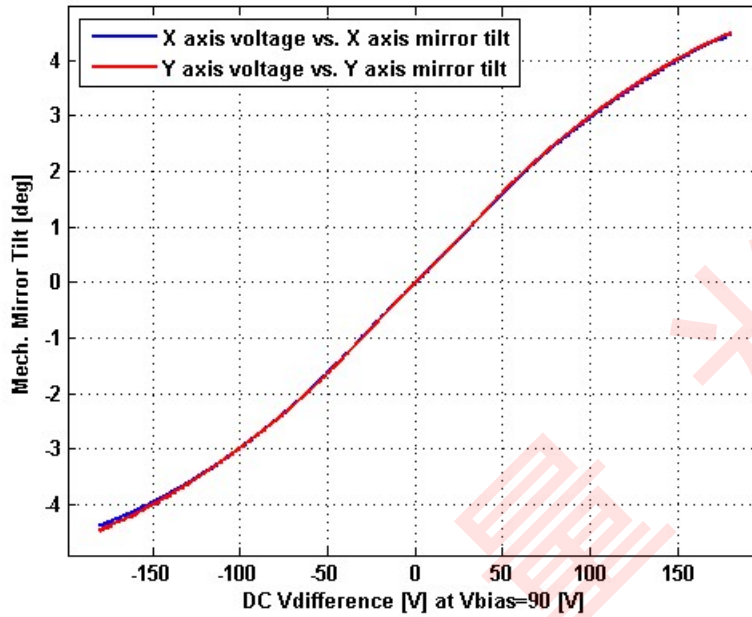
**Recommended LPF Cutoff Frequency (6th Order Bessel) [Hz] :** 200

**Date and Time Report was Created:** 23-Aug-2019 at 11:59:24

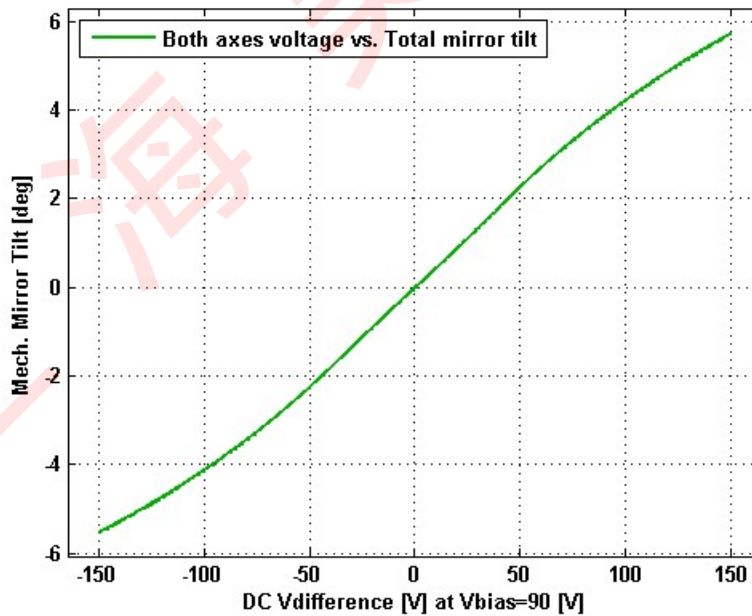
---

# Static Response

## Voltage vs. Mech. Angle - Individual Axes

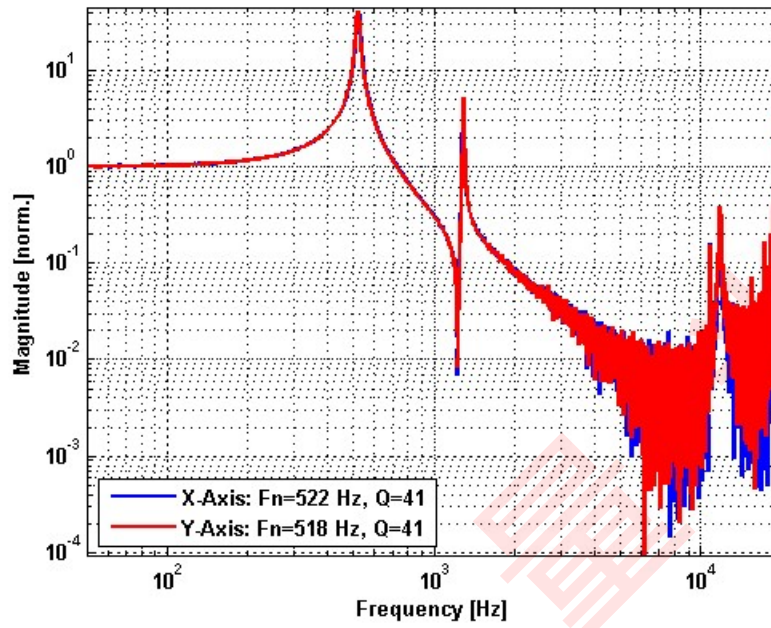


## Voltage vs. Mech. Angle - Coupled Axes

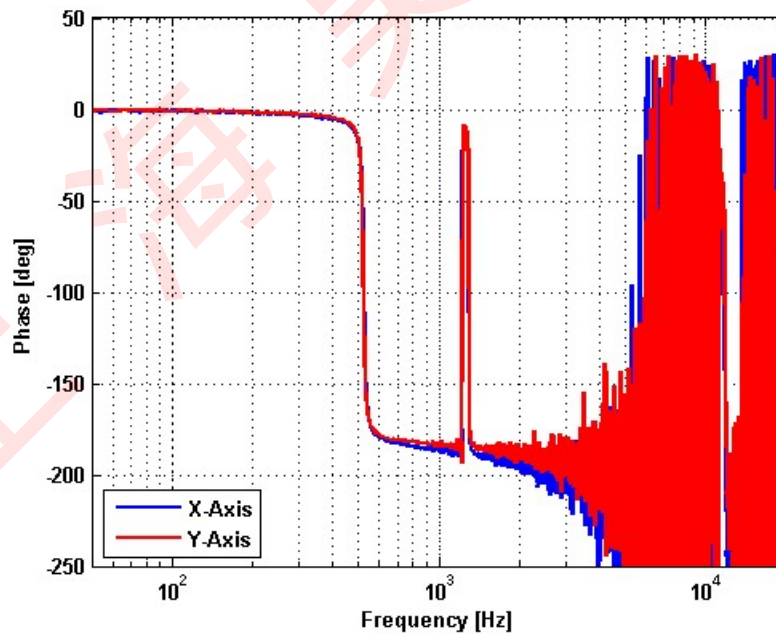


# Frequency Response

## Small Signal Frequency Response - Magnitude

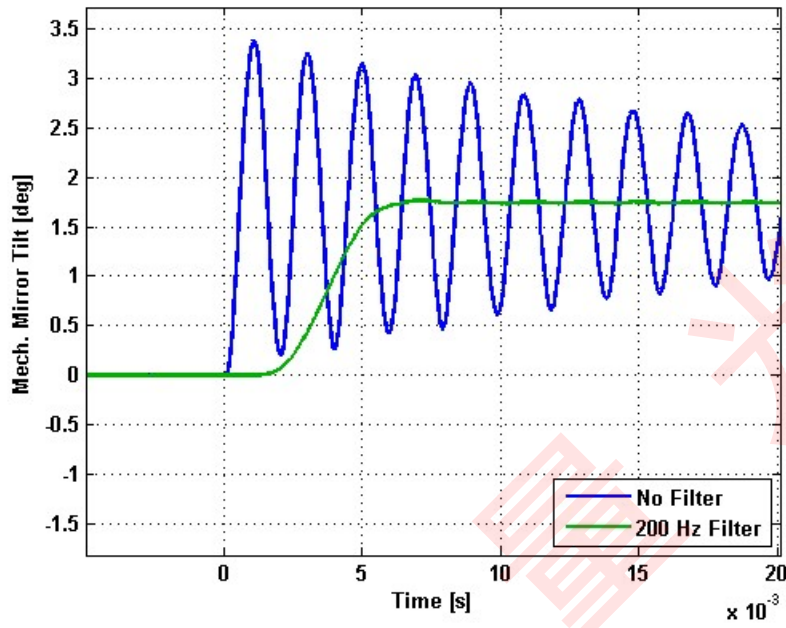


## Small Signal Frequency Response - Phase

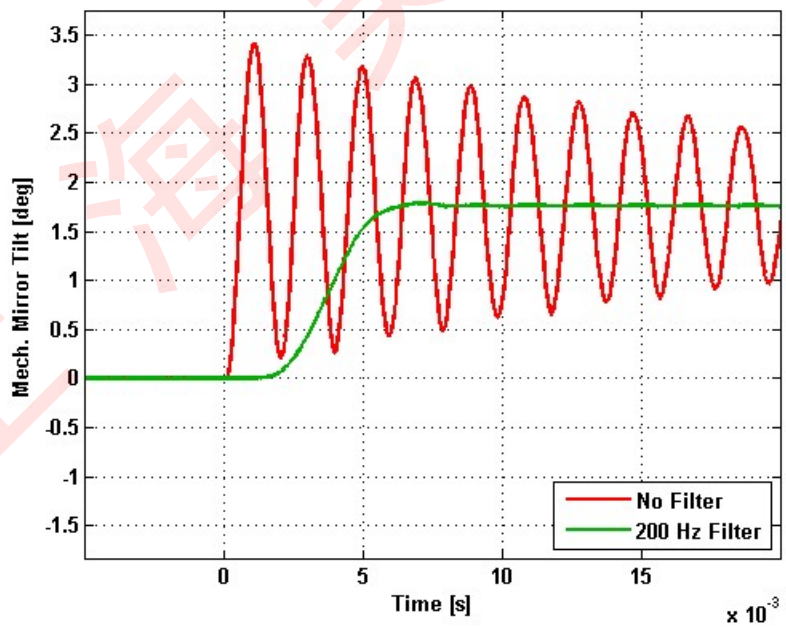


# Step Response

## X-Axis Step Response



## Y-Axis Step Response

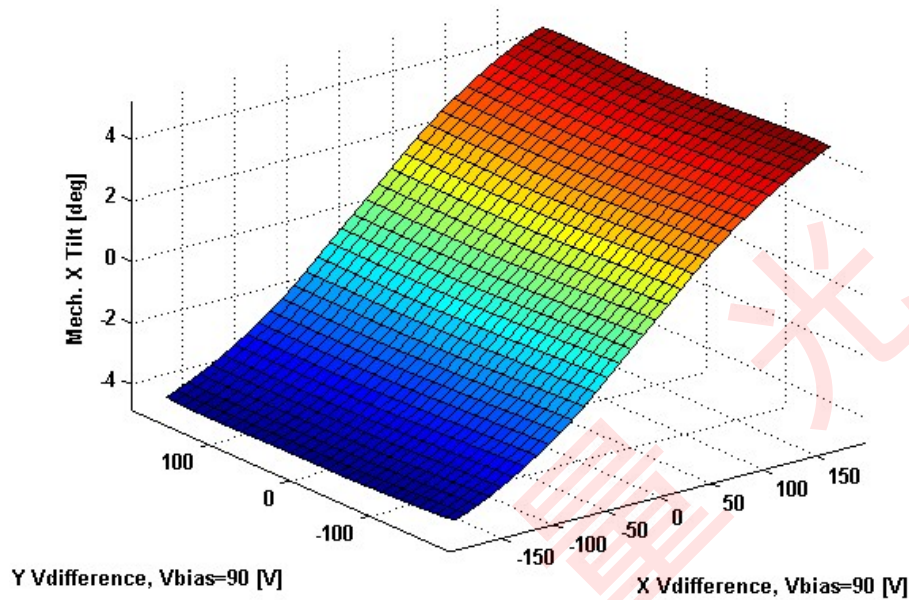




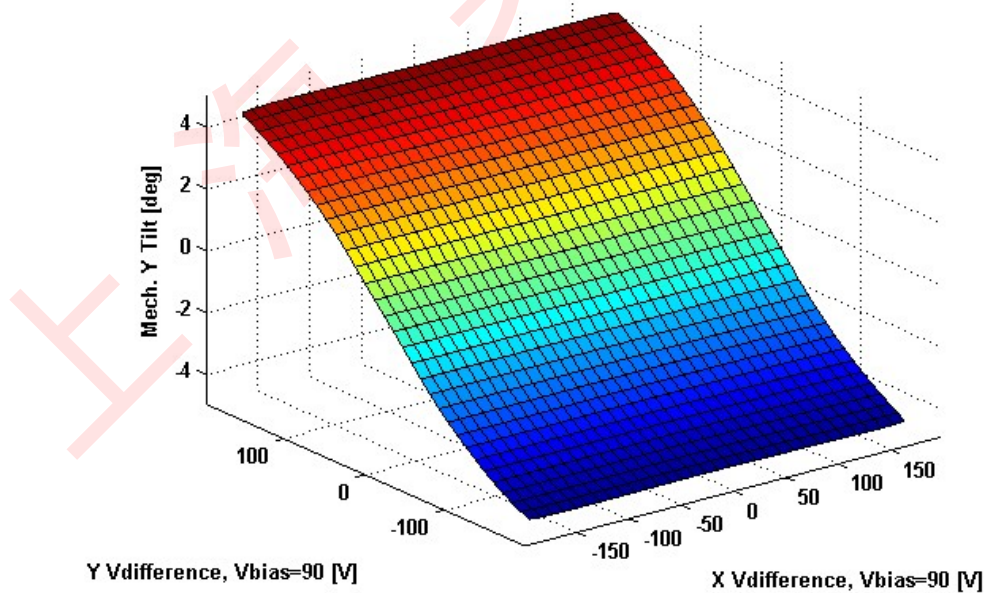
---

# 2D Lookup Tables

## Voltage vs. X Mech. Angle - Lookup Table



## Voltage vs. Y Mech. Angle - Lookup Table



# Y vs. X Tilt - Addressable Mech. Angles

