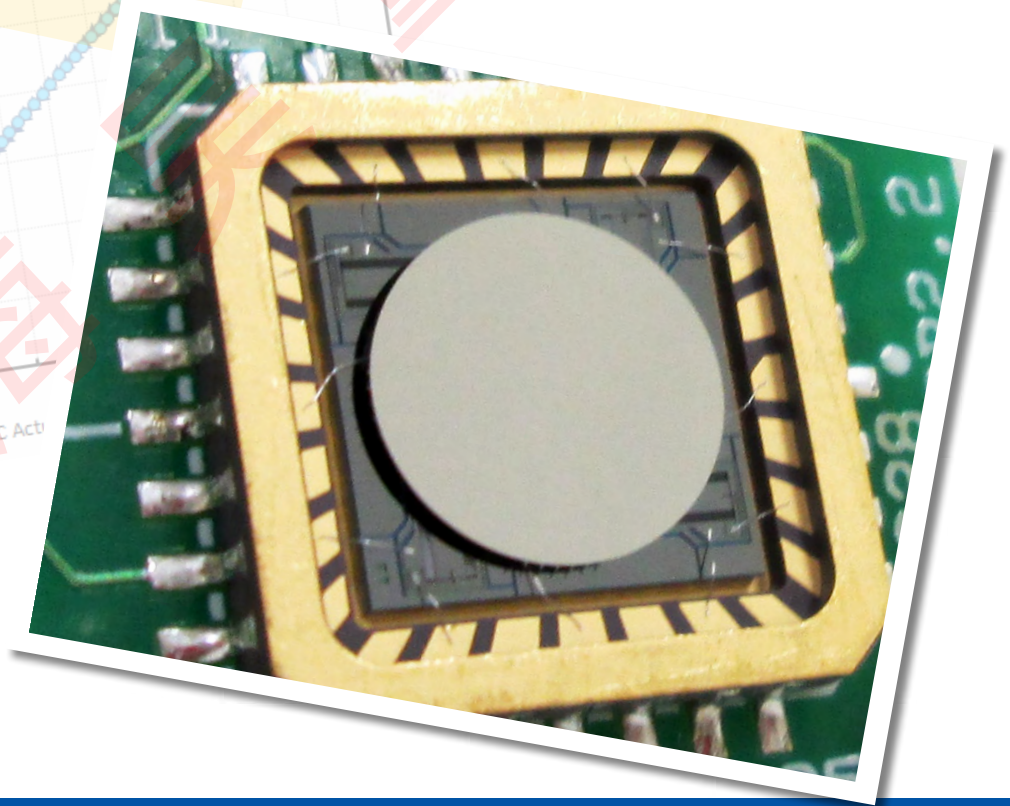
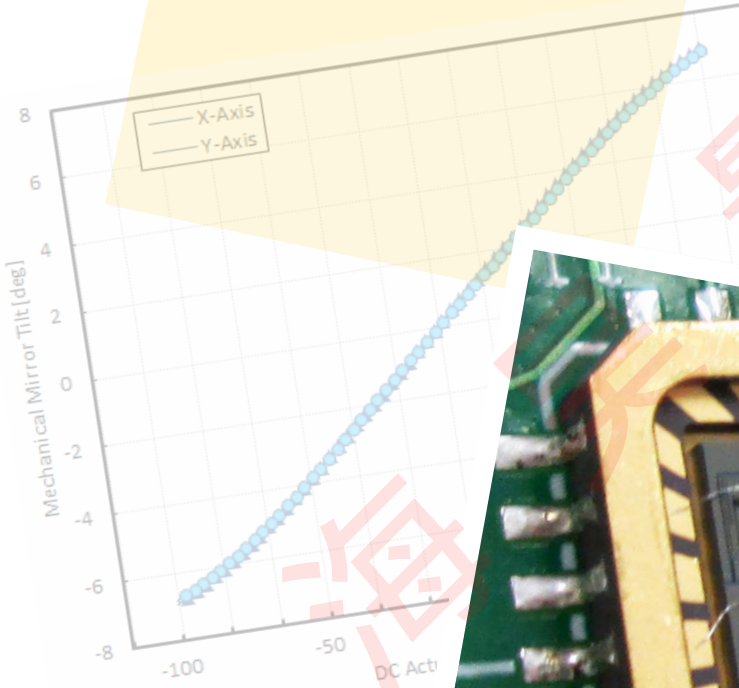


Gimbal-Less Two-Axis Scanning MEMS Micromirrors

Device Datasheet
S45892



Device Parameters Summary

Device ID : S45892

Actuator Type: A5L3.3(C2)

Actuator Mode : Gimbal-less Dual-Axis Quasistatic

Mirror Type and Size : Bonded mirror of 3.6mm diameter

Mirror Coating : Aluminum

Maximum Mech. Angle - X Axis [degrees] : 4.4253

Maximum Mech. Angle - Y Axis [degrees] : 4.4092

Maximum Vdifference - X Axis [V] : 180

Maximum Vdifference - Y Axis [V] : 180

Driver Bias Voltage (Vbias) [V] : 90

Maximum Mech. Angle - Coupled Axes [degrees] : 5.6113

Resonant Frequency - X Axis [Hz] : 686

Resonant Frequency - Y Axis [Hz] : 684

Quality Factor - X Axis : 55

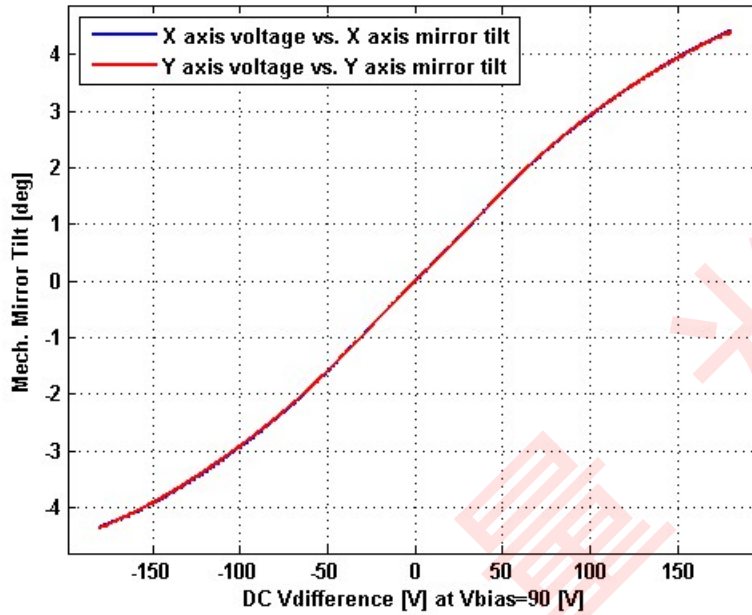
Quality Factor - Y Axis : 62

Recommended LPF Cutoff Frequency (6th Order Bessel) [Hz] : 250

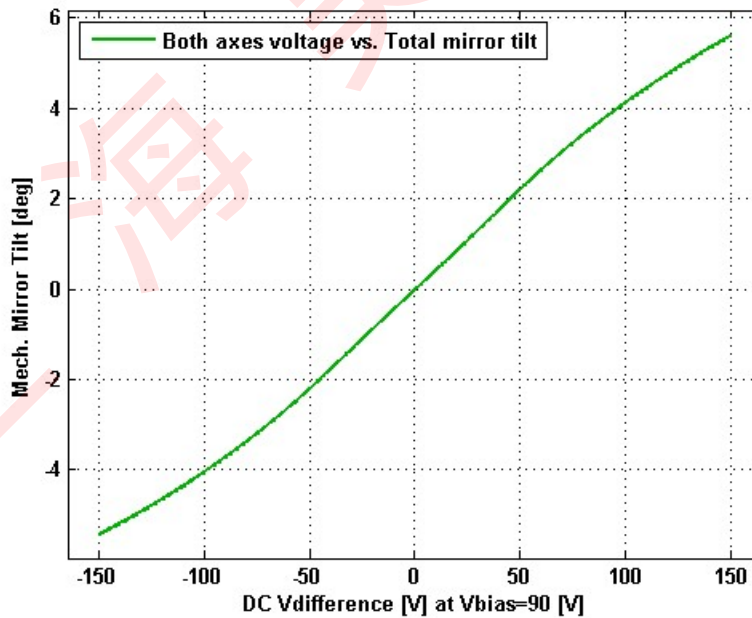
Date and Time Report was Created: 23-Aug-2019 at 11:48:26

Static Response

Voltage vs. Mech. Angle - Individual Axes

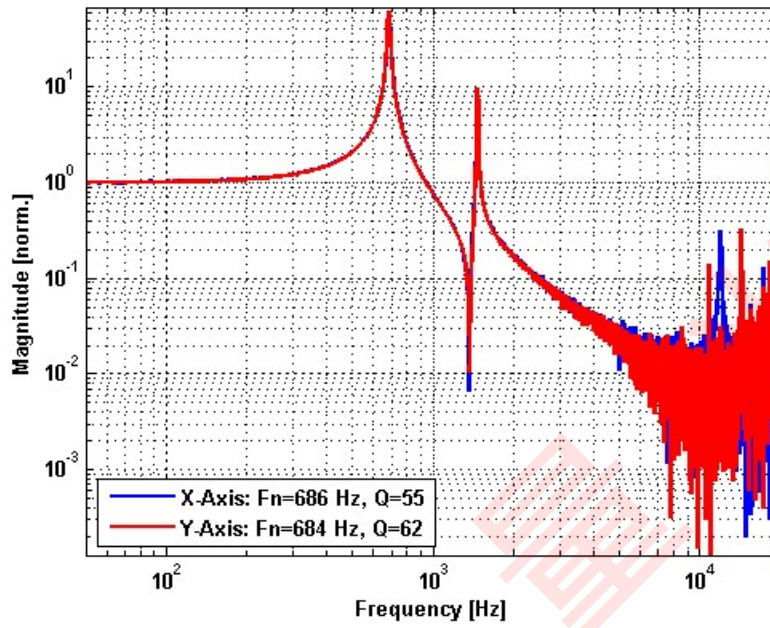


Voltage vs. Mech. Angle - Coupled Axes

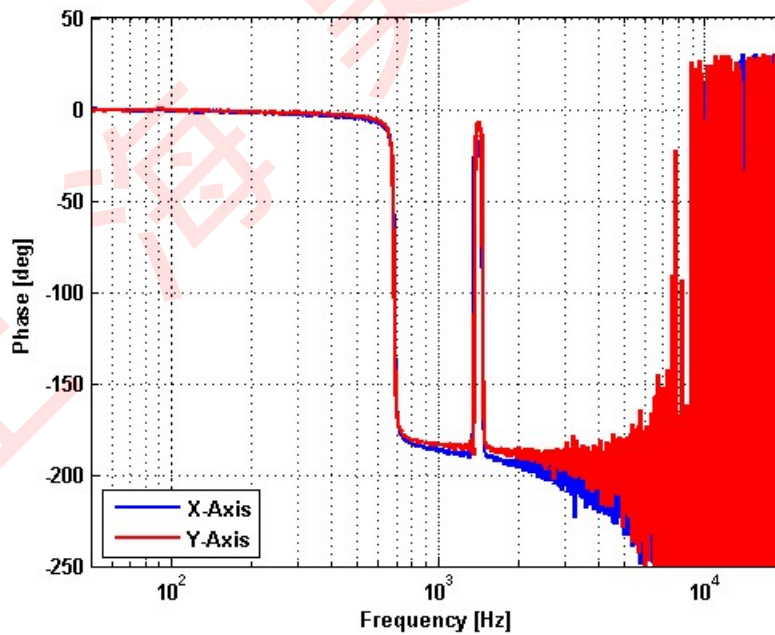


Frequency Response

Small Signal Frequency Response - Magnitude

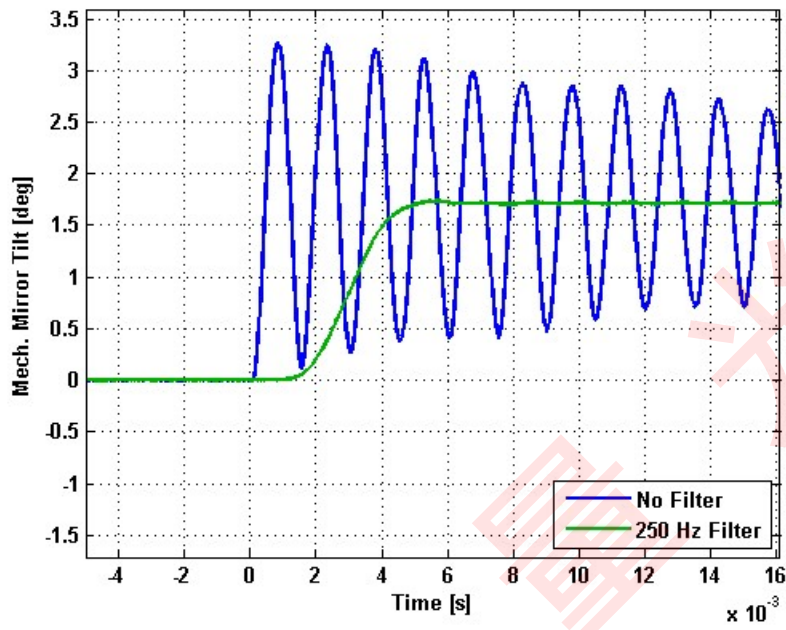


Small Signal Frequency Response - Phase

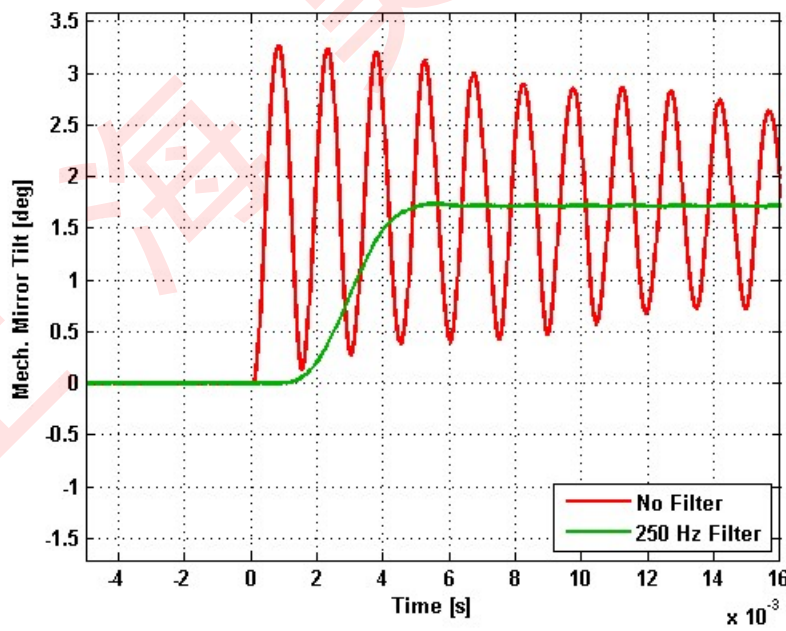


Step Response

X-Axis Step Response

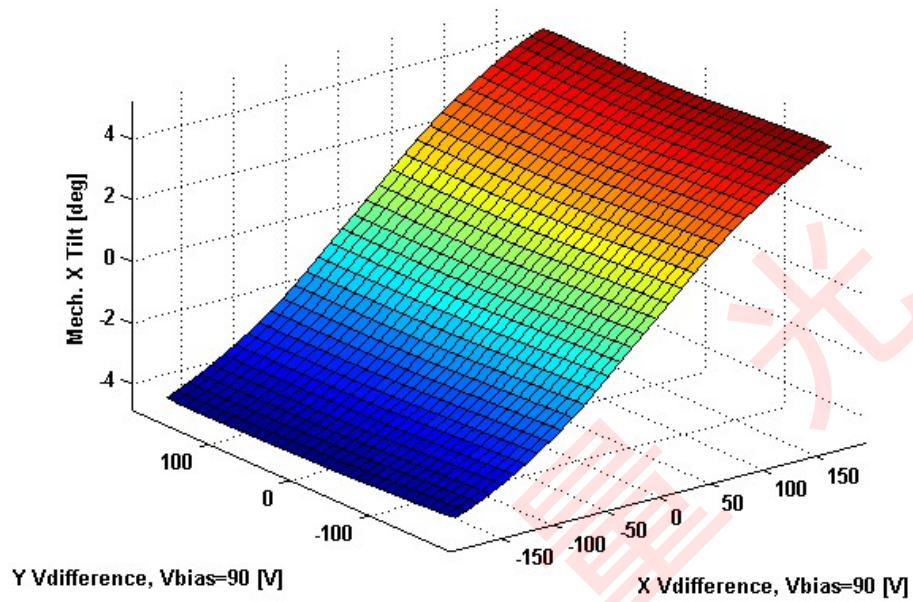


Y-Axis Step Response

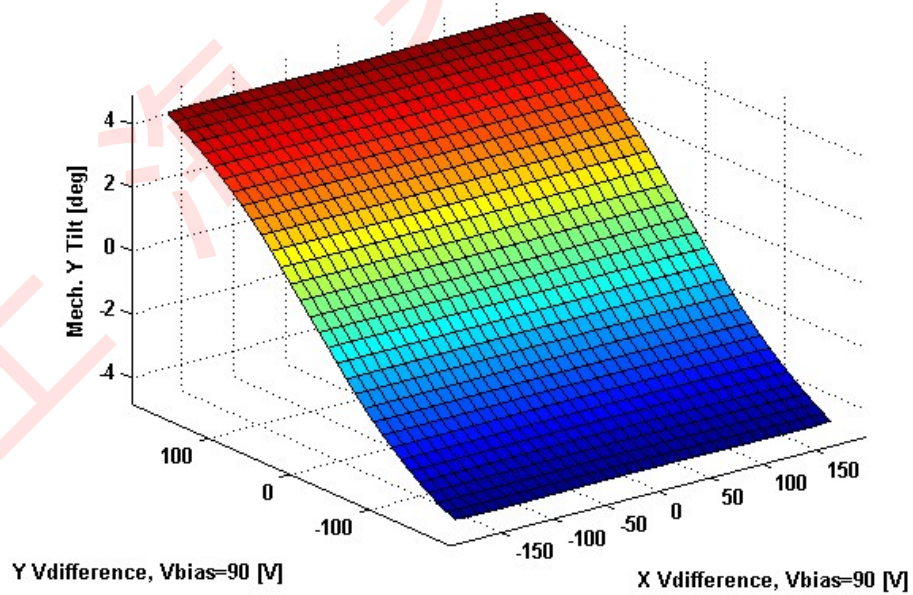


2D Lookup Tables

Voltage vs. X Mech. Angle - Lookup Table



Voltage vs. Y Mech. Angle - Lookup Table



Y vs. X Tilt - Addressable Mech. Angles

